

# VI SERIES

solar way ,shining life







## NB-300~325W-TME



### ● V SERIES

Nabai redefined the high-efficiency module series by integrating 210mm\*182mm silicon wafers with multi-busbar and half-cut cell technologies. Nabai panel combined creative technology effectively and extremely improved the module efficiency and power output.

### ● KEY FEATURES

-  Less mismatch to get more power
-  Less power loss by minimizing the shading impact
-  Competitive low light performance
-  3 times EL test to ensure best quality
-  Ideal choice for utility and commercial scale projects by reduced BoS and improved ROI
-  Outstanding reliability proven by PVEL for stringent environment condition:
  - Sand, acid, salt and hail stones
  - 2400 Pa wind load and 5400 Pa snow load
  - Anti-PID

### ● QUALITY SYSTEM

ISO9001 / ISO14001 / ISO45001

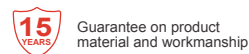
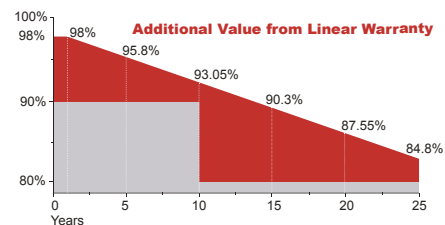
### ● PRODUCT CERTIFICATION



### ● INSURANCE



### ● WARRANTY



### Electrical Characteristics

Module Type	NB-300-TME	NB-310-TME	NB-320-TME	NB-325-TME
	STC	STC	STC	STC
Maximum Power at STC (Pmp)	300	310	320	325
Open Circuit Voltage (Voc)	38.30	38.50	38.7	38.85
Short Circuit Current (Isc)	10.03	10.3	10.56	10.7
Maximum Power Voltage (Vmp)	31.4	31.6	31.8	31.9
Maximum Power Current (Imp)	9.55	9.81	10.06	10.19
Module Efficiency at STC(ηm)	18.44	19.05	19.67	19.97
Power Tolerance	(0, +4.99)			
Maximum System Voltage	1000V DC			
Maximum Series Fuse Rating	20 A			

STC: Irradiance 1000 W/m<sup>2</sup>, module temperature 25°C, AM=1.5  
Power measurement tolerance: +/-3%

### Temperature Characteristics

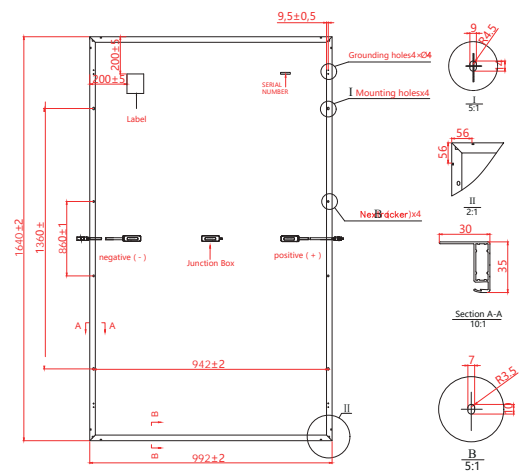
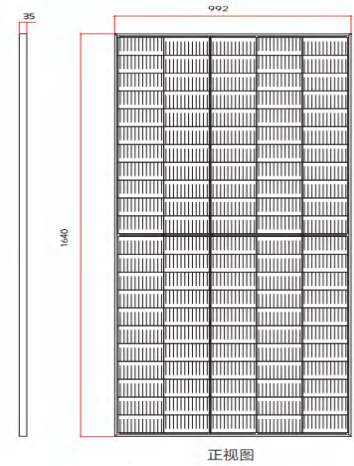
Pmax Temperature Coefficient	-0.34 %/°C
Voc Temperature Coefficient	-0.26 %/°C
Isc Temperature Coefficient	+0.05 %/°C
Operating Temperature	-40 ~ +85 °C
Nominal Operating Cell Temperature(NOCT)	45±2 °C

### Mechanical Specifications

External Dimensions	1640x992x35mm
Weight	18.5kg
Solar Cells	PERC Mono (110pcs)
Front Glass	3.2mm AR coating tempered glass, low iron
Frame	Anodized aluminium alloy
Junction Box	IP68, 3 diodes
Output Cables	4.0mm <sup>2</sup> , 250mm(+)/350mm(-) or Customized Length
Mechanical Load	Front side 5400Pa/ Rear side 2400Pa

### Packing Configuration

	1640x992x35mm
Container	40'HQ
Pieces per Pallet	31+3
Pallets per Container	28
Pieces per Container	952



### I-V Curve

